

# St. Michael the Archangel Parish

## A Stewardship Parish

Established July 5, 1840

**Missions:** † Immaculate Conception-Holualoa † Holy Rosary-Kalaoa † St. Paul's-Kawanui † St. Peter's-by-the-Sea-Kahalu'u

**Parish Office/St. Michael's Church Address:** 75-5769 Alii Drive | Kailua-Kona, HI 96740 | Phone: (808) 326-7771

**Email Address:** [stmichaelarchangel@rcchawaii.org](mailto:stmichaelarchangel@rcchawaii.org)

**Office Hours:** Monday 10am—5pm ~ Tue/Thurs 8:30am—2:30pm ~ Wed/Fri 8:30am—5pm

**Website:** [stmichaelparishkona.org](http://stmichaelparishkona.org)

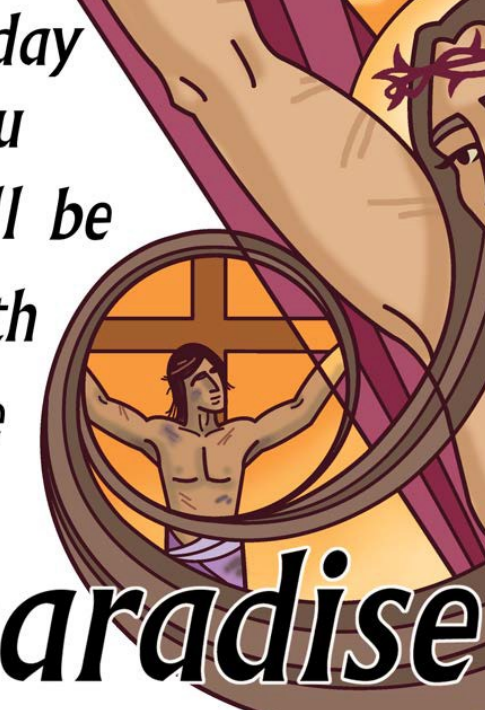
**November 24, 2019**

## Our Lord Jesus Christ, King Of The Universe

Reading I – 2 Samuel 5:1-3 | Psalm – 122:1-2, 3-4, 4-5

Reading II – Colossians 1:12-20 | Gospel – Luke 23:35-43

*Today  
you  
will be  
with  
me  
in  
paradise*



© J. S. Paluch Co., Inc.

### Of Kings and Kingship

Americans have an uncomfortable relationship with kings. The American Revolution was fought for independence from King George, after all. Nonetheless, today every Catholic church around the world celebrates the Solemnity of Our Lord Jesus Christ, King of the Universe. Today's feast

invites us to look beyond our national loyalties and rejoice in our primary identity. We are children of God in Jesus, Christ the King. Our readings help us consider what it's like to belong to God's kingdom. The book of Samuel captures the deep longing of the Israelites for a king to shepherd them. Saint Paul reminds the Colossians that we belong to the kingdom of Christ, whose power he praises in a beautiful hymn. Finally, Luke's Gospel calls to mind the kind of king Jesus chooses to be—a suffering servant, a man for others. By sacrificing His life for us, Jesus throws open the gates of Paradise.

—Copyright © J.S. Paluch Co.

*“By sacrificing His  
life for us, Jesus  
throws open the  
gates of Paradise.”*

### Next Week's Readings

Reading I – Isaiah 2:1-5 | Psalm – 122:1-2, 3-4, 4-5, 6-7, 8-9

Reading II – Romans 13:11-14 | Gospel – Matthew 24:37-44

## Life of Stewardship

On this Feast of Christ the King, our readings show us that we serve the greatest of Kings, who is at the same time the humblest of Kings. Christ is the perfect model of servant leadership. And it is an indescribable privilege that He has called us to be servant leaders — stewards in the work of advancing His Kingdom.

In our second reading, from St. Paul's letter to the Colossians, Paul describes the great power and dignity that characterize Christ the King. "All things were created through Him and for him. He is before all things and in him all things hold together." It makes you want to stand up and cheer. That's our King!

Yet, what a contrasting description of the same King we find in our Gospel passage, from Luke. Now, we see our King nailed to the Cross. Everyone from rulers, to soldiers, to the criminals on either side of Christ is mocking Him. They tauntingly urge Him to prove His kingship by coming down from the Cross to end His suffering with a great show of power. "If you are the King of the Jews, save yourself."

But He does not. Amazingly, it is in this moment of seeming weakness that the full breadth of His greatness as king is displayed. Though all things were created through and for Him — Christ chooses to live entirely for others, for us!

What does this mean for us as His followers and stewards of His kingdom? Precisely that our lives are not about us. They are about Christ and others. And we will advance His kingdom to the extent that we embrace this mindset: my life is not about me; it is about serving the King of kings.

—Copyright © 2019—Catholic Stewardship Consultants, Inc.



## Mahalo, Faafetai, Dziekuje, Choukrane, Grazie, Danke

A Big Mahalo to *Stan Haanio* for all he does as our Diocesan Planning & Building Commission Representative for the West Hawaii Vicariate and our Parish Building and Maintenance Chair. He oversees our phase 2 building project and also takes care of all 5 St. Michael's Church properties.

## Faith Formation

### Next Opportunity for Infant Baptism

The next Infant Baptism will be on *Sunday, January 26<sup>th</sup>* at either 7am, 9am or both. Classes for parents and godparents will be held, *January 19th* at St. Michael's at 1:30pm.

### Faith Formation—Grades K-5

Darlene Gawlik's third graders have been having fun! We made origami animals when we learned about St. Francis, the Patron Saint of animals. We made pinwheels to show we can't see the wind, but can feel it's effects, just like we can't see the Holy Spirit, but we feel it's effects. We read a story about feuding zebra groups (are zebras white with black stripes, or black with white stripes?) to learn that everyone is our neighbor who should be treated kindly. The third graders have been sharing the Good News by praying for others, and helping others in their families, schools, and communities. We made welcome cards for new members of our church, including the newly baptized, and get well cards and sympathy cards for those in our church who could use comfort. Finally, we are starting to learn about Advent and Christmas.

No class next Sunday, December 1st due to Thanksgiving weekend. Classes resume December 8th.

## Parish News

### Today is Commitment Sunday

Today all parish families are asked to bring their Commitment Card to Mass. During Mass, as a parish community, we offer God our gifts of time, talent, and treasure. Our goal is to be a Stewardship Parish—a community who is noticeably committed to prayer, parish ministry, and generous financial support. All three are equally important. May God bless you as you discern how He is calling you to grow closer to Him this year.

### Save your KTA receipts

This year, Thelma Bacxa will be collecting KTA receipts to purchase Turkey's and Ham's for 3 needy organizations for Thanksgiving and Christmas: *Ulu Wini, Family Support, and the Women's Domestic Abuse Shelter*. Please put your KTA receipts (from October 30th—



REV. KONELO FALETOI  
Pastor

REV. NOÉ ACOSTA PÉREZ  
Parochial Vicar

CYNTHIA M. TAYLOR  
Pastoral Associate  
cytaylor@rcchawaii.org

DARLENE GAWLIK  
dagawlik@gmail.com

JOANNE AGDEPPA  
bigdeppa@hotmail.com  
Religious Education

EDWINA FUJIMOTO  
Youth Minister  
efujimoto@rcchawaii.org

SHIRLEY DAVID  
Pastoral Council Chair

DAVE BATEMAN  
Finance Council Chair

SHARMAYNE NAONE  
Stewardship Council Chair

ROBERT LEOPOLDINO  
Capital Campaign Committee Chair

TJ MOSES  
Liturgy Ministry

CAROLINE SMITH  
Funeral Ministry

PAULETTE ADAMS  
Wedding Coordinator

SUSAN KEEN  
Business Manager  
skeen@rcchawaii.org

SUSAN BENDER  
Administrative Assistant  
stmichaelarchangel@rcchawaii.org

BRENDA NELSON  
Parish Receptionist/Bulletin  
bnelson@rcchawaii.org

## WEEKDAY MASSES

### ST. MICHAEL THE ARCHANGEL

Monday thru Saturday – 7am

Mon-Tues-Thurs-Fri – 12noon

CONFESSIONS—Saturday - 9—9:30am

(or by appointment: 326-7771)

## WEEKEND MASS SCHEDULE

### ST. MICHAEL THE ARCHANGEL

Saturday – 5pm; Sunday – 7am / 9am / 4pm

12noon -Spanish / 6:00pm -Spanish

### IMMACULATE CONCEPTION

Sunday – 8am

### HOLY ROSARY

Sunday – 10am

November 28th) in an envelope and put in the box on the kiosks. If you would like to donate a Turkey or Ham, please bring to St. Michael's Church the Sunday **before** Thanksgiving (**November 24<sup>th</sup>**) or the Sunday **before** Christmas (**December 22<sup>nd</sup>**). See Thelma before or after Mass. Mahalo for your generosity!

## Catholic Campaign for Human Development

Please be generous in today's special collection, which supports the Catholic Campaign for Human Development. In the United States, one in six people live in poverty. Through this collection, you support programs that address the causes of poverty and provide a sustainable future for people across the country who struggle. In addition, 25% of the funds we collect will remain in our diocese to fund local antipoverty projects. Please prayerfully consider how you can support this collection and work on the margins. More information about the Catholic Campaign for Human Development can be at [www.usccb.org/cchd/collection](http://www.usccb.org/cchd/collection).

## Men's Group

Are you a Catholic Gentleman? Come join the Men's Group on **Monday, November 25<sup>th</sup>** and explore how you can be a better father and husband. We will meet on the south lanai at 6pm, followed by a dinner prepared by the Knights of Columbus.

## Thanksgiving Day Mass

Thanksgiving Day Mass will be at **9am** at **St. Michael's** on **November 28<sup>th</sup>**.

There will be **no** 7am or 12noon Mass.

## Office Closed

The Parish Office will be **closed** on **Thursday, November 28<sup>th</sup>** and **Friday, November 29<sup>th</sup>** in Observance of the Thanksgiving Holiday. Gobble! Gobble!

## Best Advent Ever

Join Matthew Kelly and the Dynamic Catholic team for BEST ADVENT EVER—a free email program that will help you enjoy a few minutes of peace and prayer each day during the hectic holidays!

Take the first step toward discovering your amazing future at **BestAdventEver.com**.

# Parish Calendar

## SATURDAY, NOVEMBER 23RD

- Church cleaning, SM: 7:30—9am
- Grounds maintenance, SM: 7:30am
- Confessions, St. Michael's: 9—9:30am
- Health Directive Workshop, SM: 9am—1pm
- Gift Shop open, SM Lanai: 3:30—6:30pm
- Commitment Weekend, SM: 5pm

## SUNDAY, NOVEMBER 24TH

### OUR LORD JESUS CHRIST, KING OF THE UNIVERSE

- Gift Shop open, SM Lanai: 6:30—11:30am
- Commitment Sunday all Masses, SM
- Faith Formation Classes, SM: 10:15—11:45am

## MONDAY, NOVEMBER 25TH

- Gift Shop open, SM Lanai: 9:30am—1:30pm
- Seniors Young @ Heart—Gospel study/reflection; Bingo; light refreshments, IC Hall: 10am—12pm
- Men's Fellowship, SM south lanai: 6pm
- Church cleaning, SM: 6pm

## TUESDAY, NOVEMBER 26TH

- Talk Story, SM Lanai: 7:30am
- Charismatic Prayer Group, SM: 6:45pm

## WEDNESDAY, NOVEMBER 27TH

- Adoration, SM: 7:30am—8pm
- Food Pantry Open, IC parking lot: 9—9:45am
- Gift Shop open, SM Lanai: 9:30am—1:30pm
- Boy Scouts meeting, IC Hall: 5:30—8pm
- Benediction, St. Michael's: 8pm

## THURSDAY, NOVEMBER 28TH

- **Office Closed**—Thanksgiving Day Holiday
- Thanksgiving Day Mass, SM: 9am
- **No** Communion Service, Life Care Center
- **No** Gift Shop open
- **No** Hin & Sally Bible Study/Liturgical Scripture Study

## FRIDAY, NOVEMBER 29TH

- **Office Closed**—Thanksgiving Day Holiday
- Gift Shop open, SM: 9:30am—1:30pm

## SATURDAY, NOVEMBER 30TH

- Church cleaning, SM: 7:30—9am
- Grounds maintenance, SM: 7:30am
- Confessions, St. Michael's: 9—9:30am
- Youth Advent Retreat, St. Michael's: 9am—3pm
- Gift Shop open, SM Lanai: 3:30—6:30pm
- Kona Chorale "Joy To The World Concert", SM's: 7pm

## Christmas Bazaar

St. Michael's Christmas Bazaar will be held **Sunday, December 1<sup>st</sup> from 8am—3pm** on St. Michael's front lawn. Please contact **Renee-Mae Ota at 808-987-6942** if you have items to donate.

## St. Faustina Film

A new film, *Love and Mercy Faustina*, is about the life of St. Faustina and the Divine Mercy message revealed to her by Jesus will be shown at **Regal Makalapua**



on Monday, December 2<sup>nd</sup> at 7pm. The first showing of the film on October 28th sold out, so purchase your tickets now at <https://www.regmovies.com/movies/faustina-love-and-mercy/ho00009654#/>.

## A Tea to Honor Our Queen

You are cordially invited to a *Tea in honor of Mary for the Feast of the Immaculate Conception*. Join us **Monday, December 9th** at St. Michael's following the noon Mass and Rosary. You may bring a favorite teacup and a sweet to share if you like. Please **RSVP to Suzanne Bearth at 329-9672 or email [suzarts@hawaiiantel.net](mailto:suzarts@hawaiiantel.net) by Friday, December 6th.**

## New Parishioner Orientation

All New Parishioners are invited to an *Orientation and Lunch on Sunday, December 8th from 1:30—3pm at St. Michael's on the North Lanai*. Come and meet our priests, ministry coordinators, and receive a welcome gift!

If you have not registered with the parish, you may complete the registration form at the Orientation. Please **RSVP no later than Monday, December 2nd** by calling **Brenda Nelson** in the Parish Office to leave your name, phone number and how many will be attending so we can plan accordingly for food. Mahalo!

## Advent Penance Services

We will have our WH Vicariate Advent Penance Services at the following Parish-

es' at 6pm:  
*St. Michael's on Tue—December 3rd.*  
*St. John's on Wednesday, December 4th.*  
*Our Lady of Lourdes on Thu—Dec 5th.*  
*Annunciation on Tue—December 10th.*  
*Sacred Heart-Hawi on Wed—Dec 11th.*

## Mass Time Change

The *Kona Christmas Parade* will be held on **Saturday, December 14th at 5pm on Ali'i Drive** (beginning at the Kona Gym and ending at Coconut Grove Market-place). *The Saturday evening Mass time has been changed to 4pm.*

## 3rd Annual Christmas Concert—Po Hemolele

St. Michael the Archangel will hold our *3rd Annual Christmas Classic Concert "Po Hemolele" on Thursday,*

## December 26th.

Please join us for this fantastic fundraiser, in which 100% of all proceeds go to reduce our building fund debt. Check in will **begin at 4:30pm** with wonderful wines and cheeses before the performance. The concert will be from 5:30—6:30pm. Highly acclaimed musicians will perform Christmas Classics including *Pianist Annu Shionoya, Violinist Ursula Vietze, Cellist Michael Cripps, Dancer Shizuno Nasu and our own Walter Nicolas Bacxa and the hula ministry*. Coffee and sweets will be served following the concert.

Seating is limited. General tickets are \$75 per person and will *sell out to the first 300 registrants*. First row pews are \$2,000 each side and rows 2 and 3 are \$1,000 each side. Each side of a row can accommodate 13 adults.

Tickets will be sold after today's Masses at St. Michael's or can be purchased by calling the Parish Office at **808-326-7771**.

## Marriage Encounter

By offering Married Couples the beautiful experience of a Worldwide Marriage Encounter Weekend, the Catholic Church is affirming and supporting you in your chosen vocation – Marriage. Take advantage of this great gift to enhance your relationship and enjoy a love-filled weekend away together. The next weekend in West Hawaii is set for: **January 24—26, 2020 at Immaculate Conception Church in Holualoa**. For more info or to apply, go to [hawaiiwwme.org](http://hawaiiwwme.org) or call **808-268-1578**.

## Denny's Restaurant

The co-owner of Denny's Restaurant, Ali Sahito, has offered to donate **20% of your total bill** from Denny's to St. Michael's Church. Bring your receipts to St. Michael's and place in the metal box attached to each kiosk.

## Upcoming Events

- ♦ **Commitment Sunday:** November 23rd & 24th at all the Masses.
- ♦ **St. Michael's Bazaar:** Sunday, December 1st from 8am—3pm at St. Michael's front lawn.
- ♦ **St. Michael's Penance Service:**

## Mass Intentions

### SATURDAY, NOVEMBER 23RD

- 5pm—Carlito DelRosario, Jaime DelRosario, Jr., both deceased

### SUNDAY, NOVEMBER 24TH

#### OUR LORD JESUS CHRIST, KING OF THE UNIVERSE

- 7am—Paul & Tammy Goggin, special intentions
- 8am (IC)—Billy Yates, deceased
- 9am—Kate Cutler 70th birthday blessings!
- 10am (HR)—Karl Zimmermann, deceased
- 12noon (Spanish)—
- 4pm—Martha Marie DelRosario, 25th anniversary of her death
- 6pm (Spanish)—

### MONDAY, NOVEMBER 25TH

- 7am—Robert Lavoie, deceased
- 12noon—Laurie Courtade, deceased

### TUESDAY, NOVEMBER 26TH

- 7am—Jose Romero, Sr., anniversary of his death
- 12noon—Dan & Leona Grunow, 6th wedding anniversary blessings!

### WEDNESDAY, NOVEMBER 27TH

- 7am—Leona Grunow, 32nd birthday blessings! / Ray Gillespie, 6th anniversary of his death

### THURSDAY, NOVEMBER 28TH

- 9am—Wayne Lemanski, deceased

### FRIDAY, NOVEMBER 29TH

- 7am—Jose Romero, Jr., deceased, birthday anniversary
- 12noon—Daniel Joseph Minan, deceased

### SATURDAY, NOVEMBER 30TH

- 7am—Alanna Gray, 29th birthday blessings!

## Requesting a Mass

A Mass intention can be scheduled by calling the Office at **326-7771**. If you'd like to request a specific day and Mass time, **call well in advance of the date to secure it.** Mass cards available.

## Important Phone Numbers

Catholic Charities-Hawaii:  
 Kona - 331-4673 / Hilo - 961-7050  
 Care Hawaii: 800-753-6879  
 Domestic Abuse Shelter: 322-SAFE (7233)  
 The Friendly Place: 464-0032  
 Habitat for Humanity ReStore: 331-8010  
 HeleOn Bus: 961-8744  
 HOPE Services: 933-6013  
 Human Trafficking: Suzanna Tiapula,  
 Big Island Prosecuting Atty: 961-0466  
 The Salvation Army: (808) 326-2330  
 Office of Veterans' Services: (808) 933-0315  
 Neighborhood Place of Kona: 808-331-8777

Tuesday, Dec 3rd at 6pm.

- ♦ **St. John's Penance Service:** Wednesday, Dec 4th at 6pm.
- ♦ **Our Lady of Lourdes Penance Service:** Thursday, December 5th at 6pm.
- ♦ **Annunciation Penance Service:** Tuesday, Dec 10th at 6pm.
- ♦ **Sacred Heart-Hawi Penance Service:** Wednesday, December 11th at 6pm.
- ♦ **New Parishioner Orientation and lunch:** Sunday, December 8th from 1:30—3pm at St. Michael's.
- ♦ **A Tea to Honor Mary:** Monday, December 9th after the noon Mass and Rosary at St. Michael's.
- ♦ **3rd Annual Christmas Concert—Po Hemolele:** Thursday, December 26th at 4:30pm at St. Michael's.

## Youth Corner

Save the date for the Advent Retreat on **Saturday, November 30th at Saint Michael the Archangel from 9am to 2pm** for all grades, no charge.

On **Saturday, December 14th** The Knights of Columbus and The South Kona Prayer Group will join our Youth Ministry in serving a meal at the Affordable Housing Project at Ulu Wini from 5:30 pm. This year we'd like to gift the children with a new hoodie to keep them warm especially in the mornings at the bus stop. Your donation of new hoodies in any color, size or monetary donations will be greatly appreciated. Contact Edwina or drop off at St. Michael the Archangel Office **by 11/30/19**. Next class is on **Friday, December 13th at 6 pm**.

For more information contact **Edwina Fujimoto, Youth Ministry Coordinator**, [efujimoto@rcchawaii.org](mailto:efujimoto@rcchawaii.org) or 808-895-7105.

## Catholic Update

### Treasures From Our Tradition

Today's solemnity, the final feast of the Church year, is a youngster as feasts go. In 1925, Pope Pius XI was distressed by global political upheaval and the de-Christianizing of society. That year was a "Holy Year," keyed to the sixteen hundredth anniversary of the Council of Nicaea, when the words "and of His kingdom there will be no end" were added to the Creed. The Pope explained that although most feasts had developed over many centuries, the Church sometimes provided a new feast to address new needs. He pointed to the Feast of the Sacred Heart of Jesus, showing Christ's love and compassion in a time when many people embraced a cold and gloomy spirituality. Originally on the last Sunday of October, in the late 1960s the solemnity of Christ the King was moved to the last Sunday of the year.

Fresh from baptism's waters, we are anointed with chrism "as Christ was anointed priest, prophet, and king." This feast is a key to our identity. On this feast, we recognize Christ as a king who breaks the usual mold of kingship, and who shapes His kingdom with our hands, our words, our deeds of love and service.

—James Field, Copyright © J. S. Paluch Co.

## Stewardship of Treasure

November 16th—17th, 2019

TOTAL OFFERINGS	\$12,682.26
WEEKLY COLLECTIONS NEEDED FOR OPERATIONS	\$17,991.30
AMOUNT OVER OR SHORT	-\$5,309.04
2ND COLLECTION: DEBT REDUCTION	\$7,375.02
WEEKLY COLLECTIONS NEEDED FOR LOAN PAYMENT	\$5,396.20
AMOUNT OVER OR SHORT	+\$1,978.82
MORTGAGE BALANCE AS OF 10/31/19	\$696,315.91
MONTHLY PAYMENT	
PRINCIPAL ONLY PAYMENT	\$25,000.00
INTEREST ACCRUED	
MORTGAGE BALANCE 11/19/2019	\$671,315.91

## Sacraments

### ANOIDING OF THE SICK AND HOSPITAL & HOME

**COMMUNION** - Call the parish office at 326-7771 to make arrangements.

**INFANT BAPTISM DATES AT ST. MICHAEL'S—Sunday**—Next Baptisms will be on **Sunday, January 26th at 7am and/or 9am; Class on Sunday, January 19th at 1:30pm. Register online.**

Both parents and both godparents **must** attend.

**MARRIAGE** - Preparation begins six months before the wedding date. Call the parish office for an information packet and to make arrangements for an initial interview with the priest. Please do not lock in a wedding date until you have spoken to the priest first.

**FUNERALS** - Call the parish office before consulting with a funeral director/mortuary.

**HOME, CAR OR BUILDING BLESSINGS** - Please contact the office to schedule a blessing of your *Home, Car or Building*.

## Online Giving

St. Michael's Church provides **Online Giving**—a convenient and safe way to make a one-time or recurring donation. Getting started is easy—visit [stmichaelparishkona.org](http://stmichaelparishkona.org) and click our **ONLINE GIVING** tab. When you participate, your gift will be securely transferred directly into the parish bank account.

Or visit <https://www.osvonlinegiving.com/1837>

## Food Pantry

Every 2nd & 4th Wednesday of each month at Immaculate Conception parking lot from 9—9:45am. Bring your bag.

## St. of the Week—Andrew (first century)

\*The importance of second place

“Simon Peter’s brother” is the phrase most often used to identify Andrew. It is never spoken in reverse. Peter (June 29) was a powerful personality and a natural leader whose activity and comments take a prominent position in the New Testament. Andrew receives mention in only a few places.

But it was Andrew who brought Peter to Jesus. The Fourth Gospel tells us that Andrew and another person were followers of John the Baptist (August 29) before meeting Jesus. When they heard John pronounce Jesus “the Lamb of God,” they followed Jesus home. Time with Jesus convinced Andrew that Jesus was the Messiah, and he eagerly sought Simon Peter. His enthusiastic behavior makes it reasonable to call Andrew the first Christian evangelist.

Matthew, Mark, and Luke tell the second part of the story. Simon, Andrew, and others were fishing on the Sea of Galilee when Jesus called them. Their immediate response suggests that they were spiritually prepared for this moment by an earlier conversation with Christ.

At the miracle of the feeding of the five thousand, Andrew called attention to the boy with five barley loaves and two fish. Andrew was also among the disciples consulted when some Greeks wanted to meet Jesus.

Church tradition continues Andrew’s story by holding that he became a missionary to Russia, Greece, and Turkey. Tradition states that Andrew died a martyr’s death on November 30 in the year 69.

Although his brother’s reputation may have overshadowed Andrew’s, there is no trace of jealousy or antagonism in Andrew’s behavior. His only concern seems to have been Jesus Christ.

—Taken from Butler’s Lives of the Saints

## Blessing of the Advent Wreath

The Advent wreath is a popular custom that is celebrated in churches and homes all over the world. Its origins go back to pagan times. Its Christian symbolism was introduced in Germany in the 1600s. The wreath is made of a circle of evergreens in which are placed three purple candles and one pink (rose) candle.

The circular shape of the wreath reminds us that the love of God is without beginning or end. The evergreens represent the hope of everlasting, or eternal, happiness. The candles remind us that Jesus, the Light of the World, came to Earth to overcome the darkness of sin and selfishness. The purple candles represent our need to prepare for the coming of the Savior, and the pink (rose) candle—lit on the Third Sunday of Advent—reminds us to be joyful, for the coming of the Lord is near!

If an Advent wreath and candles are allowed in your classroom, celebrate the Blessing of the Advent Wreath. You will need: a wreath made of evergreens; three purple candles and one pink (rose) candle; matches or a lighter; and a Bible. Serve as the leader of prayer, and invite a student to proclaim the Scripture reading.

Begin by gathering the children and youth around your prayer table, which should now be covered with a purple cloth.

## Introductory Rites

**Gathering Song:** *An Advent hymn familiar to the children or youth or a song about light and/or Jesus as the Light of the World.*

## Sign of the Cross: (All)

**Introduction:** In many parts of the world, when the season of winter comes, the darkness of night is longer, and people wait for the daylight of spring.

## The Word Of God

### Scripture Reading Suggestions:

1. Isaiah 9: 1-2, 5-6 (*The people who walked in darkness have seen a great light.*)
2. 1 John 1: 5-7 (*God is light; walk in the light.*)

## Reflection:

1. Invite the children and youth to name things that give light. Invite a volunteer to keep track of how many sources of light are named.
2. Next, ask the children and youth to name ways that people give light. Again, invite a volunteer to keep track of how many ways are named.
3. Finally, invite everyone to quietly think of one way they can share the light of Jesus with another person in the week to come. (If time allows, invite volunteers to share their choices.)

## Intercessions

**Response:** Come, Lord Jesus.

1. For the Church, working to share your Good News with all, we pray.
2. For the world, especially places longing for peace, we pray.
3. For the hungry, the homeless, and all in need, we pray.
4. For the sick, and for all who care for them, we pray.
5. For each of us gathered here today, we pray.

## Blessing Of The Advent Wreath Prayer

*Loving God, your Son, Jesus Christ, is the Light of the World. Bless us as we light this wreath and enter into the season of Advent. May its candles remind us to share Christ’s light through our words and deeds. Amen.*

(Light the first candle of the Advent wreath.)

—Copyright © 2017 RCL Publishing. All rights reserved. Permission to reproduce this page for classroom use is granted.

## Thanksgiving Grace Prayer

*Fill us, O Lord, with gratitude overflowing for all the gifts we have received by Your grace. Make us ever mindful of all the animals and plants—fruits of the earth and sea—through which You give us enjoyment, nourishment and strength. Bless this food, Lord God, and us through it and may all the farmers, fishers, harvesters, and merchants whose labor helped bring us this meal participate in Your manifold blessings through Christ our Lord. Amen.*

—Fr. Joseph Veneroso, M.M. Maryknoll Fathers and Brothers





**808-327-1474**  
Auto Body, Inc.

This could be your bulletin ad.  
Call Brenda in the Parish Office  
at 326-7771 for more  
information.

## Real Estate Sales



**Lovette Liantos**  
Managing Broker  
RB-21663  
(808) 938-3910  
Lovette@GonnaLove-It.com

I donate a portion of my commission  
to St. Michael's Church on behalf of  
my clients.

Venture | Sotheby's  
INTERNATIONAL REALTY



Please pray for our son Arrion as he studies at  
St. Patrick's Seminary in Menlo Park, CA  
pursuing his calling to become a Catholic Priest.

## AD SPACE AVAILABLE

Contact Brenda Nelson in the Parish  
Office at 808-326-7771.

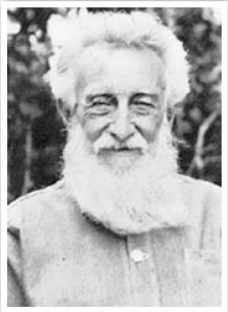


### PROFESSIONAL SERVICES

- Private Property Patrol
- Business Property Patrol
- Concerts & Shows
- On-Call Services
- Heavy Equipment Escort
- Body Guard Services

**Brian Tavares, OWNER**

Cell: 895-5029  
OFFICE: 808-895-8343  
FAX: 808-217-9560  
vikingservices@hawaii.rr.com



Please help  
promote the  
cause of Brother  
Joseph Dutton  
for Veneration.

75-5822 Neke Place  
Kailua Kona, HI 96740  
ddresie@hawaii.rr.com

Cell: 808-936-5650  
Fax: 808-329-9627

**Phyllis Dresie**  
Custom Travel Advisor  
Domestic & International Air  
Cruises•Tours•Hotels•Rental Cars



**Kona Town Travel**

## Leave a Legacy

Please help pay down the debt to  
St. Michael's Building Fund.

**A "Donate" button is on our  
website.**

Go to [stmichaelparishkona.org](http://stmichaelparishkona.org) for the  
convenience of sending any gift to the  
Building Debt Reduction Fund.

**Credit cards accepted at the Gift Shop.**

Include St. Michael the Archangel Church  
in your estate plan. An estate gift to St.  
Michael's is a visible sign of the generosi-  
ty you have shown throughout your life.

## PEREZ WALL SOLUTIONS

Over 20 years experience



**STUCCO**

Interior / Exterior Fine Finish

Claudio Perez

**895-5529**

perezwallsolutions.com

Lic# 32074

## St. Michael's Mission and Vision

**Mission:** We are disciples who act  
justly, love tenderly, and walk humbly  
with God.

**Vision:** Inspired by the Spirit of the  
Lord as disciples of Jesus, we use our  
time, talent, and treasure to serve with  
justice, love, and peace.

## THANK YOU TO OUR ADVERTISERS!

Our Weekly Church Bulletin Is Made  
Possible By Their Continued Support.

Please Patronize Our Generous  
Businesses & Let Them Know You  
Saw Their Ad!

## St. Michael the Archangel Parish GIFT SHOP OPEN:

Mon, Wed, Thursday & Fri:  
9:30am—1:30pm

Saturday: 3:30—6:30pm

Sunday: 6:30am—11:30am  
75-5769 Alii Drive ~ Kailua-Kona, HI



**The  
Gutterman  
Kona INC.**

Roofs Too!

CLEANING • REPAIR • INSTALLATION

**Bronwyn Denis**

937-1523  
322-2156 Fax

P.O. Box 350  
Holualoa, HI 96725



**EWTN**

Global  
Catholic  
Network

**107.3 FM KFIP**

## DANDY BERMORO

Maintenance • Landscaping • Irrigation

Cell: (808) 756-3699

Home: (808) 329-8596

74-5044 Palani Rd • Kailua-Kona, Hawaii 96740

cddbermore\_009@yahoo.com

Kona European Auto Repair  
We speak your car's language

74-555 Honokohau St Ste A7  
Kailua Kona, HI 96740  
(808) 731-6139

KONAEUROPEAN@GMAIL.COM  
WWW.KONAEUROPEAN.COM





## Kona's longest-running Fitness Center

Fitness - Spa - Wellness  
Since 1988

808.326.2582

Try us out at

www.theclubkona.com



**THE CLUB KONA**  
FITNESS • SPA • WELLNESS



326-9645

- Custom Soil Blends
- Landscape Rock
- Pickup Loads
- Delivery

**MARK & DENISE JERNIGAN**

74-4925 Queen Kaahumanu Hwy  
(Mauka of the Kaloko-Honokohau National Park)  
P.O. Box 4916 Kailua Kona, HI 96745



**KELLY SHAW, D.D.S., INC.**

Pottery Terrace - Palm Building  
75-5995 Kuakini Hwy., Suite 113  
Kailua-Kona, Hawaii 96740

**(808) 327-0300**



SERVICING YOUR PROPANE NEEDS!  
BOTH RESIDENTIAL & COMMERCIAL  
(808)329-5150  
www.aliigas.com

**State Farm** Matthew DeMille  
Quotes for Good (808) 331-1113

We will donate  
\$10 to Catholic Charities  
for every quote!



\*Call for Details



**Margo's Back!**

**Consulting &  
Plant Finding**

www.SunriseNurseryKona.com  
Email: sunrisenurseryllc@yahoo.com

**808-329-7593**

**Find us on Facebook**



Free Diagnosis  
No Fix - No Fee

Malware Removal  
Data Recovery  
Networking  
Security Cameras

9am to 6pm  
7 days a week!

Come check us out at our new location!

Above Home Depot • Next to Pink Mocha Cafe  
Hale Ku'i Plaza • 73-4976 Kamanu St. #103  
Kailua Kona, HI 96740 • 808.331.1808

## WINDOW SCREEN/REPAIR

**The Screen Shop**  
★ NEW LOCATION ★

Re-Screens • Security Screen Doors  
New Screens • Entry Screen Doors  
Sliding Screen Doors

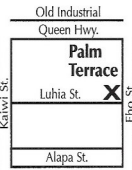
**The Window Screen Specialists**

DELIVERY AVAILABLE

Open Mon-Fri 8:00 to 5:00

**329-7160**

74-5615 Luhia St. #B-2 • Corner of Luhia and Eho St.



**808-756-1007**

flo-riteinc@hotmail.com

C-33941

**ALICE BENNETT-MORAN, RB-21514**

ABR, GRI, ePRO, MRP, SFR

*"Making 'Welcome Home' A Reality"*

**808-345-8870**

alice.bennett.moran@gmail.com

**C.J. Kimberly Real Estate, LLC**

www.cjkimberlyrealtors.com CJ Kimberly, PB

www.dodomortuary.com



**DODO MORTUARY, INC.  
& CREMATORY**

ESTABLISHED 1898

*In your time of need...*

The Oldest and Largest Mortuary on the Big Island Serving All Faiths  
with Dignity & Integrity Celebrating over 100 years of Excellence

**HILO-Main Office**

199 Wainaku Street

Hilo, Hawaii 96720

Ph: 808-935-5751

Fax: 808-935-1074

**KONA Branch**

79-7591 Mamalahoa Hwy.

Kealahakua, Hawaii 96750

Ph: 808-322-9529

Fax: 808-322-2996

Local Expert - Globally Networked



Jonathan Kiger RB, Principal Broker

jonathan@hawaii50realty.com

808.640.4511



**Hawaii 50 Realty**

73-4976 Kamanu St. #103 Kailua-Kona HI 96740

www.hawaii50realty.com

RB-22318

## LEMUS MAINTENANCE

**Landscaping:**

- Mowing
- Weed Control
- Bug Control

Irrigation Check and more!

**Painting:**

- Wood Refinishing
- Latex Paints
- Spray and more!

Call René Lemus Today!

**808-217-7938**

lemusmaintenance@outlook.com

Find us on Facebook

**HANNAN'S BARBER SHOP**

KAHUMANU PLAZA

74-5467 KAIWI ST., KONA, HAWAII 96740

SHOP-808-326-2371

HOME-808-334-1391



LIAM HANNAN ★ MASTER BARBER

HANNANSBARBERSHOP@MSN.COM

HANNANSBARBERSHOP.COM



*Love, Happiness & Peace*

**Rosana Knudson, MA, LMFT**  
Licensed Marriage & Family Therapist

Kailua Trade Center  
75-5706 Hanama Place, Suite 106A

Cell: 808.640.7377

Fax: 808.326.9358

rosanaknudson@yahoo.com

Se habla español

**EyelandEyeDOC**



Your Kama'āina Eye Care Choice!

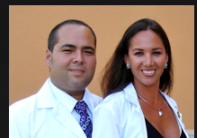
Full Service Eye Clinics & Optical Boutiques  
www.EyelandEyeDoc.com

Hilo 933.4777

Pāhoa 966.4777

hablamos español

**KONA 326.4777**



**Kona Coast Marine**

Parts • Sales • Service



**808.329.7690**

Honokohau Harbor

Holy Mary,  
Mother of  
God ~  
Pray for Us!

