

PARISH CENTER

BUILDING *On Our* FOUNDATION *for the* FUTURE

E HO'OKUMU KĀKOU I KE KĀHUA NO KĒIA MUA AKU

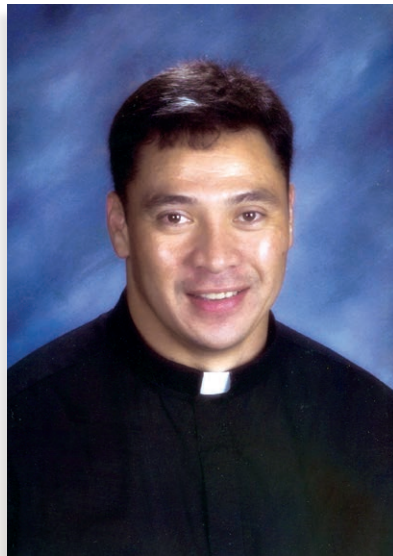


St. Michael the Archangel Parish 2019 CAPITAL CAMPAIGN



A LETTER FROM FR. LIO

My Fellow Parishioners,



Almost 180 years ago, two priests came to evangelize the people of Kailua Kona. It was through this mission that the original St. Michael the Archangel Catholic Church was built, and with that, a vibrant Catholic community was formed.

Today, nearly two centuries after the founding of our mission church, St. Michael's Parish continues to serve the greater Kailua Kona area through our various missions.

In my time as your pastor, I have witnessed firsthand Christ at work in our parish community as He has guided us in the building of our rich history. I am blessed and privileged to be a part of all that is happening here at St. Michael's, and I am deeply grateful to those individuals and families who helped build this church that we enjoy today, and who have established the foundation of what we hope to pass on to future generations.

As you well know, the St. Michael's community has persevered through the devastating loss of our former church building. But the generosity that God poured into the hearts of our parish family is what has enabled us to persevere. The charity you have shown — both in service to our community and in gifts to our parish — has truly been an inspiration. From the depths of our hardships, we have emerged a stronger faith community. And, today, we have a beautiful church building that allows us to worship our Lord. I cannot thank you enough for what you did during this difficult time.

Now, we are called to build upon the foundation we established when we built this church. After months of prayer, study, and consideration, we have decided to move ahead with the building of our Parish Center. Long before I became your pastor, this had been the dream of our parish.

Now, it is my responsibility to ensure we bring this dream to fruition.

continued on page 3

The calling for a new Parish Center has been something this faith community has wanted and needed for a long time. By moving forward with this project, we are building on the spiritual foundation that was laid 180 years ago, and that has grown exponentially over the years.

Following in the footsteps of our parish founders, it is now our turn to pick up the baton and run our leg of the race. By doing so, we will strengthen the community around us and further solidify the foundation for the next generations of Catholics in Kailua Kona.

The benefits this final addition to our campus will bring to our parish community cannot be quantified. By building a new Parish Center, we will enhance the faith life of our parish family today and for generations to come. It will be a space for our current ministries to meet, a space where new ministries will form, a space for staff members to thrive, and a space for our community to connect and grow.

With the theme, *Building On Our Foundation for the Future - E ho'okumu kākou i ke kāhua no kēia mua aku*, we are launching an ambitious \$3.5 million

campaign that will allow us to bring our parish campus to completion. The information in this brochure explains the exciting details of this project. I understand this campaign is a serious and important challenge. All of us must pray for the success of this campaign, lend our many God-given talents to its completion, and make equal financial sacrifice on all our parts to make it happen. As we work in union with Christ, we will build a place for our community to flourish.

Thank you for all you have done to make St. Michael the Archangel Catholic Church such an incredible parish community, as well as for your generosity in this endeavor. This Parish Center will build on our past, support our community, and secure our future generations.

With God as our help, I am confident that we will continue the good work that the Lord has done here in Kailua Kona.

God bless you all,



Fr. Lio
Pastor





A LETTER FROM OUR CO-CHAIRS

Fellow Parishioners,

We are blessed to be members of St. Michael's Parish. This community is incredibly unique with the rich foundation of our history, warm hospitality, and ongoing mission work in our surrounding community. Since our time here, we have found the members of this wonderful parish to be welcoming and friendly. As parishioners, our faith lives have grown and we have flourished in our involvement in parish life.

Like all of you, we want to continue the good work St. Michael's community has done by *Building On Our Foundation for the Future - E ho'okumu kākou i ke kāhua no kēia mua aku*. St. Michael's has had a major impact on us and on our families. That is why we are willing to serve as the co-chairs of this campaign and to be visible leaders in the effort to raise the needed funds of \$3.5 million for this Parish Center.

Growth continues to occur here at St. Michael's. We believe this Parish Center is a need for our current families and future generations to continue to flourish. This building will facilitate a space for our Parish community to gather, to welcome newcomers, and to form us in the faith and allow us to go out in the world and serve the Lord as God's disciples — ultimately helping us to better live out our mission: We are disciples who act justly, love tenderly, and walk humbly with God.

We have been blessed with the leadership and guidance of Fr. Lio. We are also blessed with those who have established the foundation of

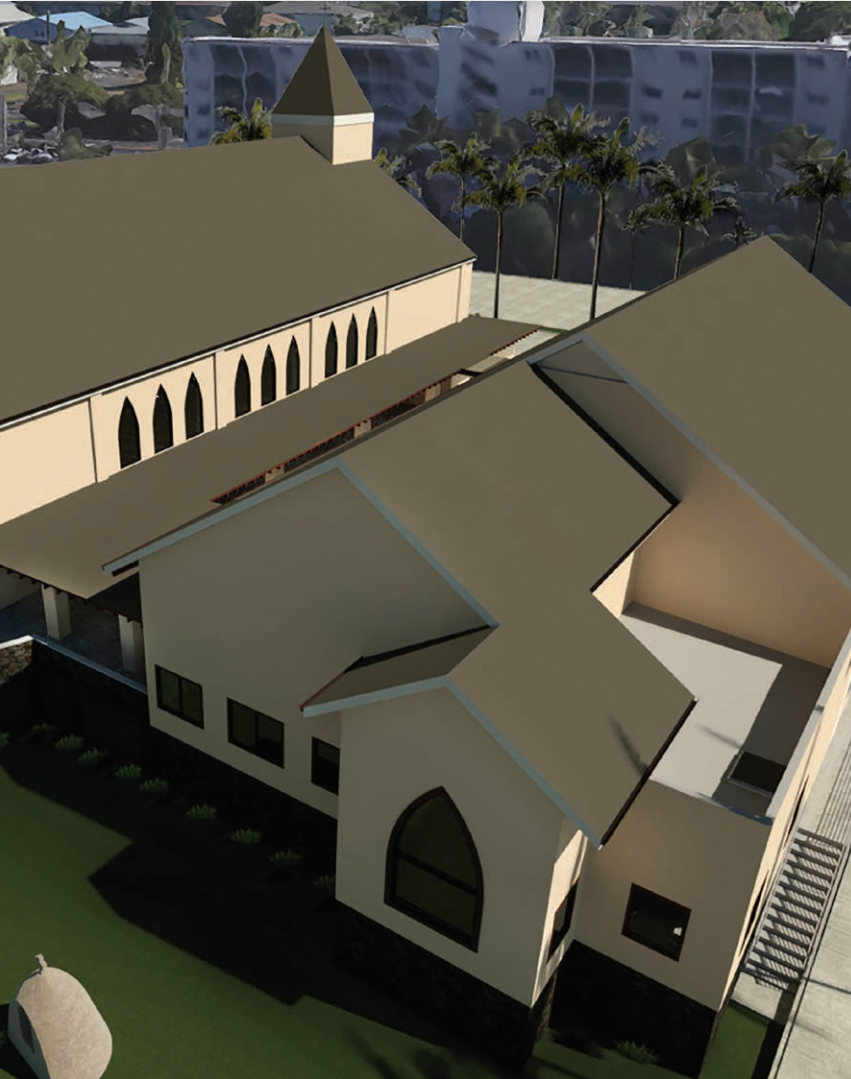
our parish that we all enjoy. Over time, we have personally seen more and more members of our parish get involved, especially in our parish missions. Our growth in recent years and our need for a space for our community to gather are the driving forces in this effort to build our Parish Center.

We are honored to serve as co-chairs for the Parish Center campaign as we are *Building On Our Foundation for the Future - E ho'okumu kākou i ke kāhua no kēia mua aku*. We thank you for your generosity in all that you have done to make St. Michael's a place where all are welcome. The final piece of the puzzle to our parish campus will be this new building, and we must consider this a tremendous opportunity for us to give something back to this loving community in an extraordinary way.

As St. Michael's strives to embody our vision — inspired by the Spirit of the Lord as disciples of Jesus, to use our time, talent, and treasure to serve with justice, love, and peace, let us each recognize that we are gifted and blessed, and let us gratefully give a portion of those gifts back to God to build up His Kingdom.

God bless you all,

Don David & Robert Leopoldino
Co-chairs



OUR MISSION

The building of our Parish Center will help our parish community better live out our mission here at St. Michael's. With our continued growth, our need for a place to gather is apparent now more than ever. We are responding to this need by building our Parish Center. This center will allow us to more effectively live out our call to discipleship through stewardship. The impact this gathering space will have on our community can be summarized into the mission we have here at St. Michael's: *"We are disciples who act justly, love tenderly, and walk humbly with God."*

ACT JUSTLY

As we gather in our new building, we will be formed to go out and live as Christ's disciples fulfilling our call to act justly. This center will be a space for formation classes to be held, prayer groups to meet, ministries to plan, and staff to execute their duties. This building will help the formation of our parish community through the space and safety that it provides. Within these walls, we hope to

form disciples that will act justly to our brothers and sisters in Christ within our parish and surrounding community with hearts of prayer and service.

LOVE TENDERLY

The Parish Center will be a space where we can gather as one community, deepen our faith lives and grow in charity. It will further us to live out our call to love our neighbors tenderly by hosting events for our parish community. This center will allow us to extend our warm Aloha to newcomers in our community in a new way, helping us to welcome others as if Christ Himself.

WALK HUMBLY WITH GOD

Through the guidance of the Spirit of the Lord, we will walk humbly with God as His disciples. We will be equipped to go out into our surrounding community to share the Gospel through evangelization and service. We will live out our call to stewardship, giving our lives to the Lord as we humbly become the hands and feet of Christ.

continued on page 6

MISSION

For more than 40 years, it has been a dream of our parish community to build a Parish Center — a place for our community to grow in faith and gather together. The foundation for our Parish Center was laid during the rebuilding of our church after the earthquake, and now it is time to fulfill this dream and make it a reality. This center has been on our minds and hearts for many years, and now we are ready to begin *Building On Our Foundation for the Future - E ho'okumu kākou i ke kāhua no kēia mua aku.*

THE PARISH CENTER WILL BE A
ONE-STORY MULTI-PURPOSE
FACILITY, WHICH WILL INCLUDE:

- Accommodation for Approximately 300 People
- Large Gathering Room, Including the Ability to Split it Into Two Separate Rooms
- Warming Kitchen – Including Refrigerator, Stove, Oven and Sink
- Two Handicap Accessible Family Bathrooms
- Modern Audio-Visual Equipment
- Upgraded Security System for the Entire Parish Campus
- Adequate Space for Parish Ministry Meetings, Events, Presentations, and More
- Private Offices for Parish Leaders and Staff

PARISH CENTER BUILDING SCHEDULE

Started Plan Design & Cost Estimate
March 2019

Finalized Design
April 2019

Submitted Construction Permits
July 2019

Parish Center Groundbreaking
TBD

Parish Center Construction Complete
November 2020

Dedication of Our New Parish Center
December 2020



WAYS TO SUPPORT THE PARISH CENTER CAMPAIGN

MAKE A FIVE-YEAR FINANCIAL PLEDGE

We encourage you to consider an ongoing gift over the next five years of this campaign. We are reliant upon you — through your good stewardship as the people of this parish — to raise the \$3.5 million needed for this project. This is our parish, and only through sacrifice can we achieve our goals. We cannot achieve our \$3.5 million goal with one-time gifts, although we thank you in advance for any contribution that you make, from the smallest to the largest. Remember, a pledge to a campaign is not legally binding, but should be made in good faith and with a heart of a faithful steward.

METHODS OF MAKING A PLEDGE

- *Cash, Check, Credit or Debit Card:* This is the most common method of making a gift. You can receive a charitable deduction on your tax return as a benefit from this form of gift. When you complete the pledge card, indicate both the method of payment, as well as the timeframe for the payment. There will be payment reminders sent in accordance with the payment schedule you select (monthly, quarterly, semi-annually, annually).
- *Automatic Withdrawal:* You may make your gift through your financial institution by choosing the amount of gift and the date you would like it deducted from your account. Contact the parish office if interested in this option.

- *Property, Life Insurance, or Annuities:* We will work with you on ways to give using these resources. Please contact the parish office for more information.
- *Stocks and Securities:* Stocks, bonds, or mutual fund shares that have appreciated can have an immediate impact on our campaign and also create an income tax deduction for you based on their current value. Since there is no capital gains tax when you make a charitable gift, you receive an additional benefit above and beyond the charitable gift donation.

REMEMBER THE TWO FACETS OF GIVING:

- *Offertory:* Please do not deduct from your regular contribution to the offertory collection to make a gift towards the campaign. This contribution is just as important now as ever.
- *The Parish Center Campaign:* The commitments and payments to the campaign are in addition to your regular offertory contributions. Gifts to the campaign are restricted to the goals and purposes of this particular campaign.



P^{OUR} PARISH CENTER

MISSION:

*"We are disciples who act justly, love tenderly,
and walk humbly with God."*

VISION:

*"Inspired by the Spirit of the Lord as disciples
of Jesus, we use our time, talent, and treasure to
serve with justice, love, and peace."*



St. Michael the Archangel Parish
2019 CAPITAL CAMPAIGN